



**APARNA**

Lead the future

Aparna KANOPY

**Tulip**

Value Apartments @  
Gundlapochampally, Kompally

*Truly makes sense*

A joint venture with J.P. Morgan

[www.Zricks.com](http://www.Zricks.com)

## THE FUTURE IS HERE

Say goodbye to narrow lanes, insecure locality, speeding traffic and a cramped lifestyle. Say hello to space, freedom and happiness. Aparna KANOPY TULIP @ Gundlapochampally, Kompally — the only gated community of its kind that gives value for money and much, much more.

Nestled in a wide canvas of greenery, Aparna KANOPY TULIP is an integrated gated community spread over 72 acres comprising 360 2 & 3 BHK apartments (Phase 1A), with an ultra-modern Clubhouse, swimming pool, tracks for jogging, cycling, parks and landscaped areas for elders and play ground for children, among a host of other facilities and amenities.

With its unique design and unrivaled natural beauty, Aparna KANOPY TULIP @ Gundlapochampally, Kompally, is the only project of its kind in Hyderabad to give you world-class quality standards at an affordable price.



Actual picture showing  
completed community

### Highlights

- Secure gated community spread over 72 acres
- 360 2 & 3 BHK Apartments (Phase 1 A)
- Extensive landscaped parks and jogging paths
- Close to schools, hospitals and banks
- Close to shopping centers
- Close to Gundlapochampally railway station
- Power Back up for 5 light points in every apartment
- Most modern amenities
- 24 hours surveillance

### Connected to Rail and Road

MMTS Station Gundlapochampally:	1.5 kms
Outer Ring Road:	2.5 kms
National Highway:	4 kms
Secunderabad Station:	18 kms

### Connected to Schools

Abhaya School Opposite to Aparna KANOPY TULIP	
DRS International School:	1 km
UNICENT Child Centric School:	4 kms
Sadhu Vaswani International School:	6 kms
Siva Sivani Public School:	6 kms
Niraj International School:	6 kms
Kennedy International School:	6 kms
Jain International School:	12 kms

### Connected to Colleges

Malla Reddy College of Eng. & Technology:	1 km
Narsimha Reddy Engineering College:	2 kms
St.Peter's Engineering College:	3 kms
Al Ameena Engineering College:	5 kms
CMR Engineering College:	6 kms
Siva Sivani Management College:	6 kms

### Connected to Industries

Jeedimetla Industrial Estate:	5 kms
Medchal Town:	12 kms
Bio-Tech Park:	15 kms

### Connected to Hospitals

Ram Hospital:	5 kms
Narayana Hridayalaya:	6 kms
Balaji Multi Speciality Hospital:	7 kms
Usha Mullapudi Cardiac Centre:	7 kms
Harsha Hospital:	8 kms

### Connected to Banks

SBI:	2 kms
Canara Bank:	4 kms
Union Bank:	5 kms
Andhra Bank:	5 kms
Axis Bank:	6 kms

### Connected to IT Hubs

Mahindra Satyam Training & Development Centre:	6 kms
--	-------

### Connected to Entertainment

Dhola-Ri-Dhani:	4 kms
Cine Planet (Multiplex):	7 kms
Runway 9 (Go Karting):	6 kms
Diwan Dhaba & other famous Hyd Dhabas:	7 kms



Map not to scale

Distances indicated are approximate.

## CLUB @ KANOPY TULIP

Among the highlights at Aparna KANOPY TULIP is the fabulous air-conditioned clubhouse. It is an architectural delight with an ideal mix of form and function.

This will also be a happening place and a centre for social gatherings of all kinds. In addition to regular events that promote group interactions, you can host private celebrations – birthdays, weddings, festivals and anything else that you may want to celebrate.

If you like to burn off some fat there is a fantastic fitness room within the clubhouse premises with all the popular equipment exclusively meant for the residents -- cycling machines, running machines, workout stations amongst others. Or you could opt to relax in the health spa with a nice cold drink.

### AMENITIES

- G + 2 level, 12,000 sft AC Clubhouse
- AC Gym and Swimming Pool
- Basketball and Lawn Tennis Courts
- “Tot-Lot”

Aparna KANOPY TULIP @ Gundlapochampally, Kompally. The perfect gated community designed to move your life to a totally new level, beyond everything you can imagine and expect today.



# Proposed Site Layout of Aparna Kanopy

Total Project Area: Approx 72 Acres

## Phase 1 A



### Aparna Kanopy Tulip

- Total Area : Approx 14 Acres
- Built-up Area : 0.9 million sft
- No. of Apts : 360, 2 & 3 BHK
- No. of Towers : 6
- Sft : 2 BHK - 930 | 1010
- : 3 BHK - 1155 | 1225
- : 1395 | 1495

# FLOOR PLANS



2 BHK - East Facing - 930 Sft



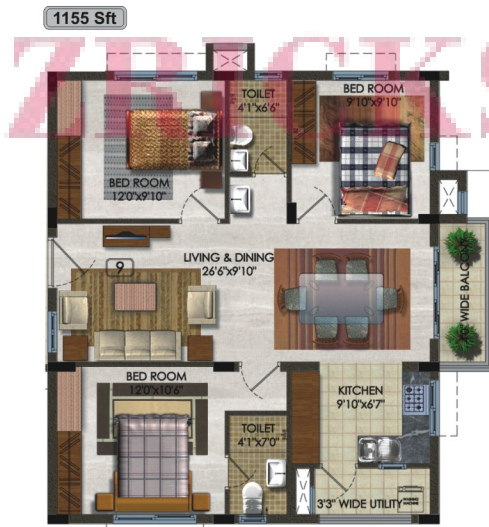
2 BHK - West Facing - 930 Sft



2 BHK - East Facing - 1010 Sft



3 BHK - East Facing - 1155 Sft



3 BHK - West Facing - 1155 Sft



3 BHK - East Facing - 1395 Sft

## SPECIFICATIONS

**Framed Structure** : R.C.C. framed structure to withstand Wind & Seismic Loads

**Superstructure** : 8" thick solid / hollow block work for external walls & 4" thick solid block work for internal walls

### Plastering

Internal : Single coat plastering for walls & Ceiling

External : Two coats plaster for External walls, R.C.C. & Masonry surfaces

### Doors & Windows

Main Door : Teak Wood frame with masonite skin moulded door shutter with Melamine polishing Teak Wood finish & reputed make finish

Internal Doors : Sal Wood / Hard Wood frame with flush door with paint & reputed make fittings

Windows : Aluminium powder coated two track with 4 mm thick glass

French Doors : Aluminium Powder coated two track with float glass of 5 mm thick

Grills : Grills will be provided to windows upto 2nd floor with paint finish & for upper floors at additional cost

### Painting

External : Two coats of Exterior Emulsion paint over one coat of texture finish

Internal : Two coats of Acrylic Emulsion paint over smooth putty finish

### Tiles (Flooring)

Living, Dining, Bedroom & Kitchen

: 24" x 24" Vitrified tiles- Standard make

Bathrooms : Acid Resistant & Anti-skid Ceramic Tiles - Standard make

Utilities / Wash : 12" x 12" Anti-skid Ceramic Tiles - Standard make. Provision for washing machine & wet area for washing utensils

Corridors : 16" x 16" Ceramic Tiles - Standard make

Staircase : Kadapa / Tandoor Blue

### Tiles (Cladding)

Bathrooms : 8" x 12" Ceramic Tile dadoing upto 7' height - Standard make

Dadoing In Kitchen : Ceramic Tiles dado up to 2'-0" height above kitchen platform - Standard make

Utilities / Wash : 8" x 8" Ceramic Tile Dado up to 2'-8" height - Standard make

Kitchen platform : Granite Platform with Stainless Steel Sink with supply of treated water connection with provision for fixing of water purifier

### Sanitary works

Bathrooms : All bathrooms consist of

1. Rectangular type wash basin
2. Floor mounted EWC with flush tank of reputed make
3. Hot & Cold wall mixer with shower for all bathrooms
4. Provision for Geysers in all bathrooms
5. All C.P. Fittings are Chrome Plated of reputed make

### Electrical

1. Concealed Copper Wiring
2. Power outlets for Air Conditioners in Master Bedroom only
3. Power outlets for Geyser in all bathrooms
4. Power plug for refrigerator, mixer/ grinder in Kitchen & washing machine in Utility
5. Plug points for TV & Audio Systems in Living Room & Master Bedroom
6. Miniature Circuit Breakers (MCB) for each distribution board
7. Switches complying IS Standards

### Telecom

1. Telephone points in Living & Master Bedroom
2. Intercom facility to all the units connecting Security

### Cable TV

: Provision for Cable Connection in Master Bedroom & Living Room

### Internet

: Internet provision in Living & Master Bedroom

### Lifts

1. Automatic Passenger Lifts and Goods lift (MS powder coating) with rescue device & V3F for energy efficiency
2. Entrance with Vitrified Tile Cladding

### Power Back Up

1. D.G. back up for lifts & common areas
2. Five points in each apartment

## Some of our completed projects in Hyderabad



**APARNA KANOPY TULIP (2012)**  
350 Value apartments - Phase 2A  
Gundlupochampally, Kompally



**APARNA HILLPARK BOULEVARD (2012)**  
94 Premium villas, Miyapur, Chandanagar



**APARNA CYBER COMMUNE (2011)**  
730 HI-end apartments, Nallagandla



**APARNA SAROVAR (2010)**  
1120 Lifestyle apartments @ Nallagandla



**APARNA HEIGHTS 2 (2010)**  
96 Super deluxe apartments, Kondapur



**APARNA CYBER COUNTY (2009)**  
59 Independent villas, Gopannapally



**APARNA TOWERS (2008)**  
312 Super deluxe apartments, Kondapur



**APARNA COUNTY (2008)**  
125 Independent villas, Halefezzpet



**APARNA SHANGRI-LA (2008)**  
40 Independent villas, Gopannapally, Gachibowli



**APARNA ORCHIDS (2006)**  
59 High-end independent villas, Hitelex



**APARNA RESIDENCY (2006)**  
30 Elegantly designed apartments, Kondapur



**APARNA HEIGHTS (2006)**  
132 Super deluxe apartments, Kondapur



**APARNA CHANDRADEEP (2006)**  
30 Ultra deluxe apartments, Banjara Hills



**APARNA SENOR VALLEY (2005)**  
40 Designer villas, Jubilee Hills



**APARNA LAKE VIEW (2002)**  
20 High-end super deluxe apartments, Begumpet

## Projects under implementation in Hyderabad



**APARNA KANOPY LOTUS (Work in progress)**  
91 Value villas, Gundlupochampally, Kompally



**APARNA AURA (Work in progress)**  
135 Super Luxury Residential Apartments, Jubilee Hills



**APARNA HILLPARK AVENUES (Work in progress)**  
647 Smart Apartments, Miyapur, Chandanagar



**APARNA CYBERZON (Work in progress)**  
1530 HI-end Apartments, Nallagandla, Gachibowli



**APARNA HILLPARK LAKEBREEZE (Work in progress)**  
943 Loveliness, Miyapur, Chandanagar



**APARNA SAROVAR GRANDÉ (Work in progress)**  
720 Luxury Lifestyle Apartments, Nallagandla



**APARNA HILLPARK GARDENIA (Work in progress)**  
116 Premium Luxury Villas, Miyapur, Chandanagar



Home loans from:



06/2013 3000 This is an information booklet only. Not a legal offering for sale/agreement

Aparna KANOPY

**Tulip**  
Value Apartments @  
Gundlupochampally, Kompally

*Truly makes sense*

A joint venture with J.P. Morgan

Aparna Shelters Pvt. Ltd.,

#802, Astral Heights, 6-3-352, Road No.1, Banjara Hills, Hyderabad - 500 034, INDIA

To Move to a Better Home, call: 939 391 9201/02/03/04

E-mail: sales@aparnaconstructions.com | www.aparnaconstructions.com

www.Zricks.com

\*Conditions apply.